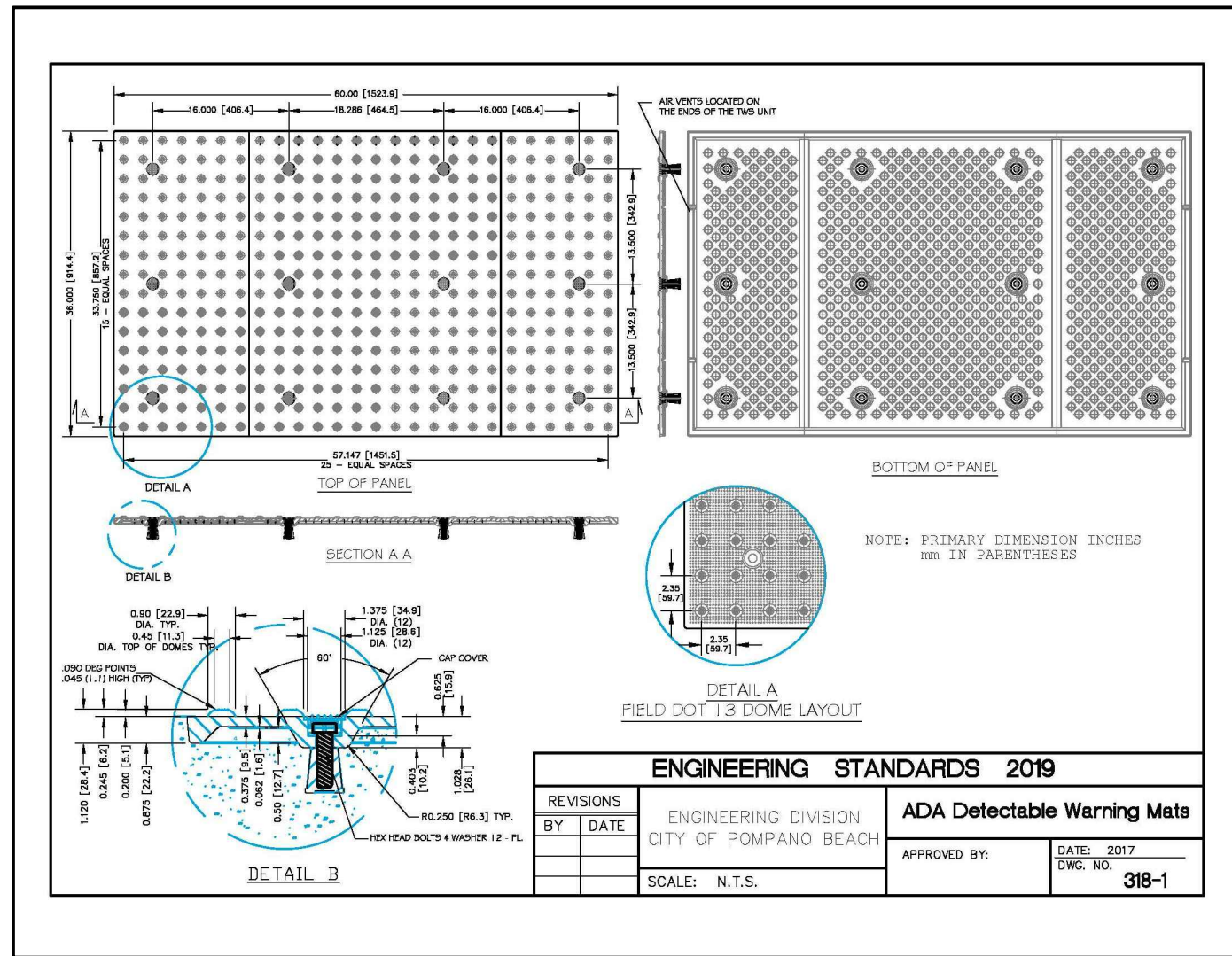


Digital
by Daniel
Alonso
Date:
2023.08.08
15:52:30
PZ22-12000026

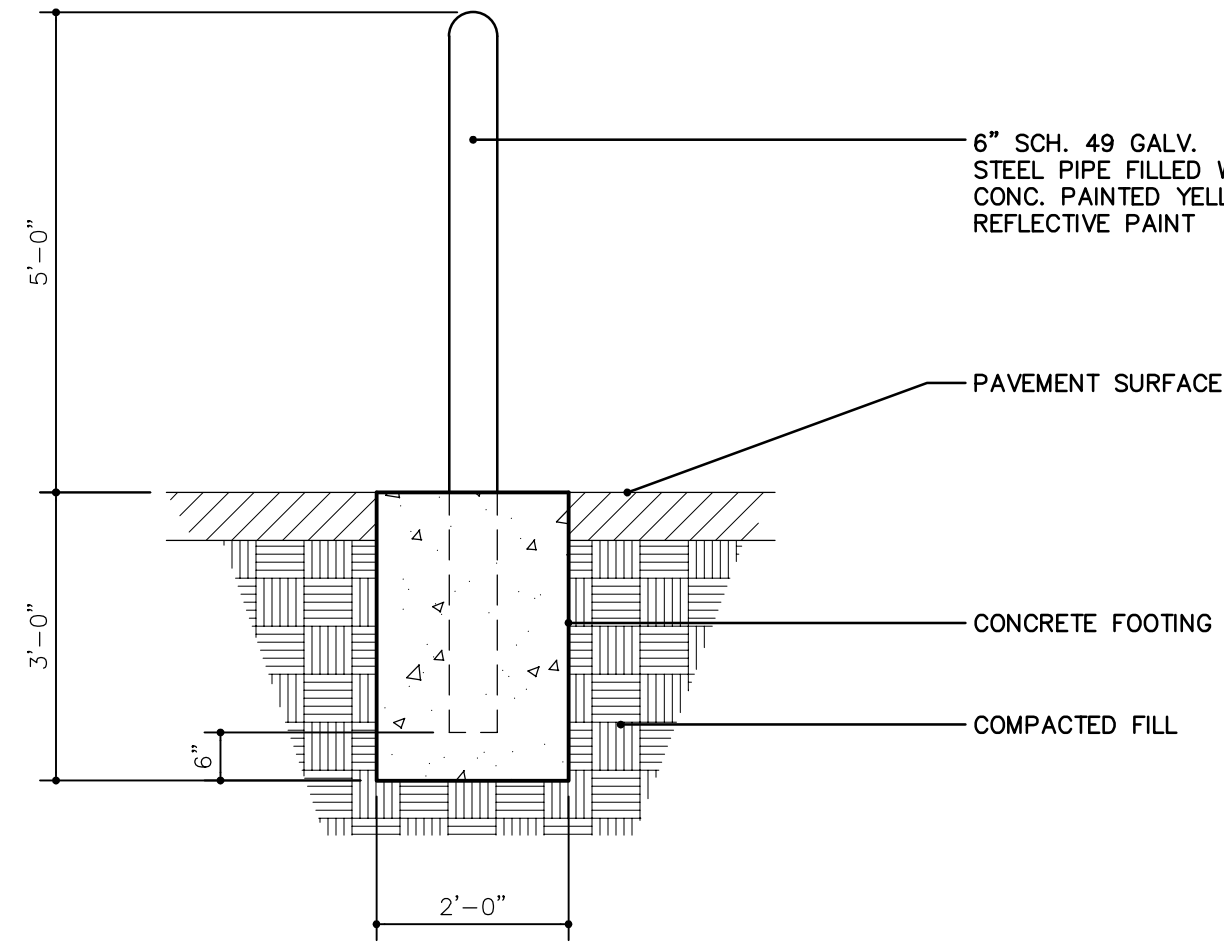
01.25.23 LT DRC Review Submittal
Job A2165
Shut 10.08.21
Consulting Engineer

Proposed Offices
Power Petroleum HQ
Owner: 201 SW 12 Ave, Inc.
201 SW 12 Ave, Pompano Beach, 33069



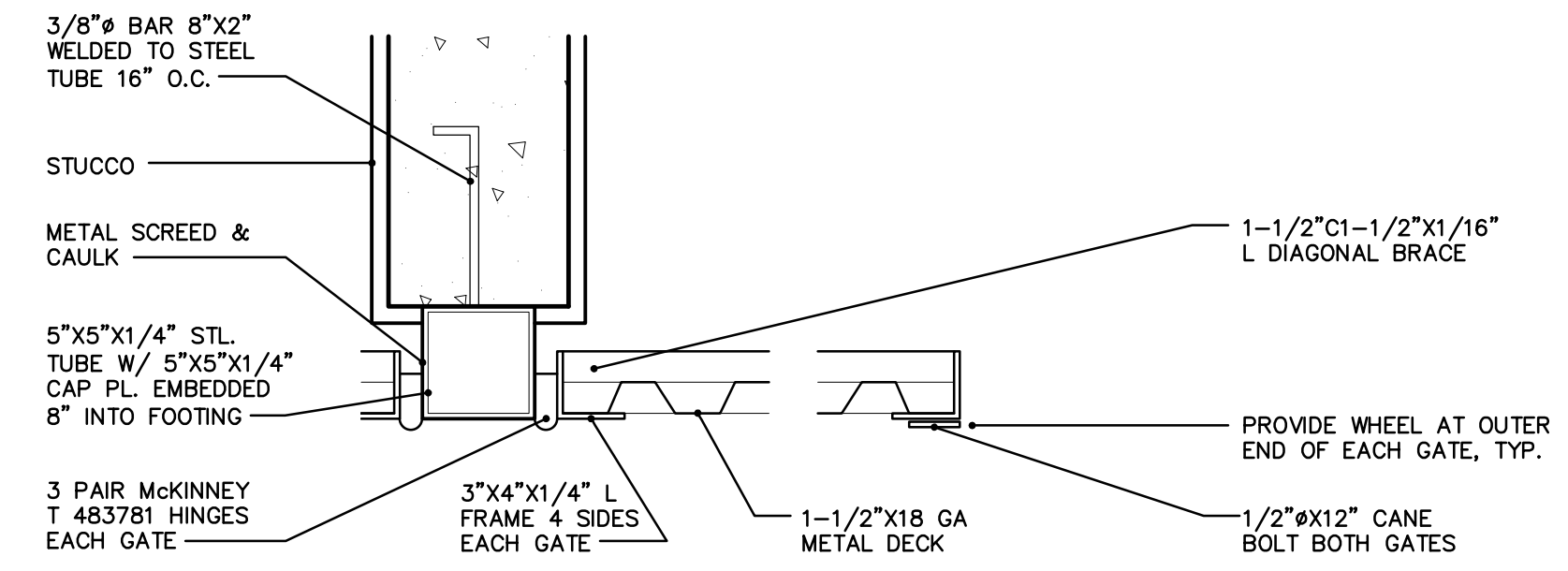
ADA DETECTABLE WARNING MAT DETAILS
SCALE: N.T.S.

4



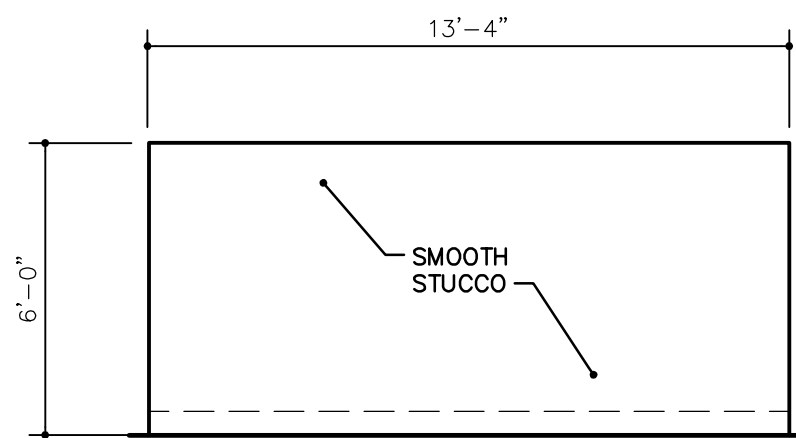
METAL BOLLARD DETAIL
SCALE: 1/2"=1'-0"

2

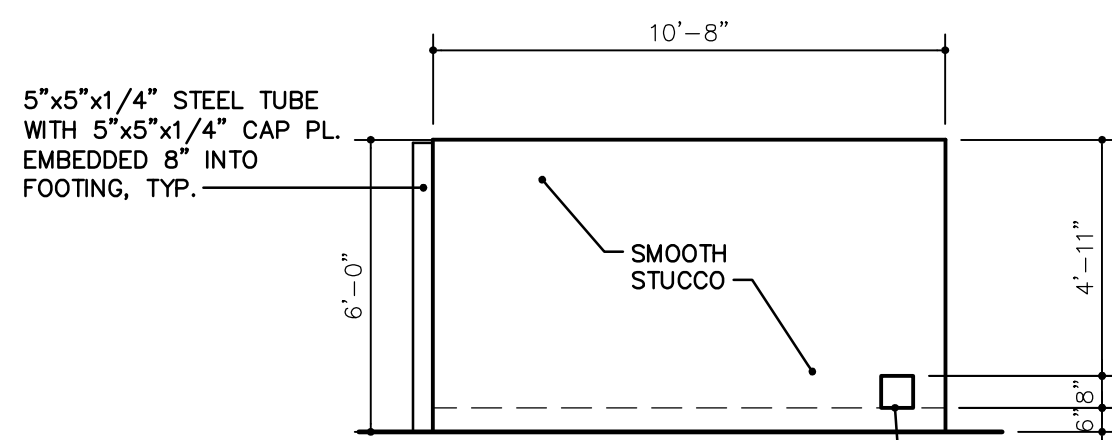


GATE JAMB DETAIL
SCALE: 1-1/2"=1'-0"

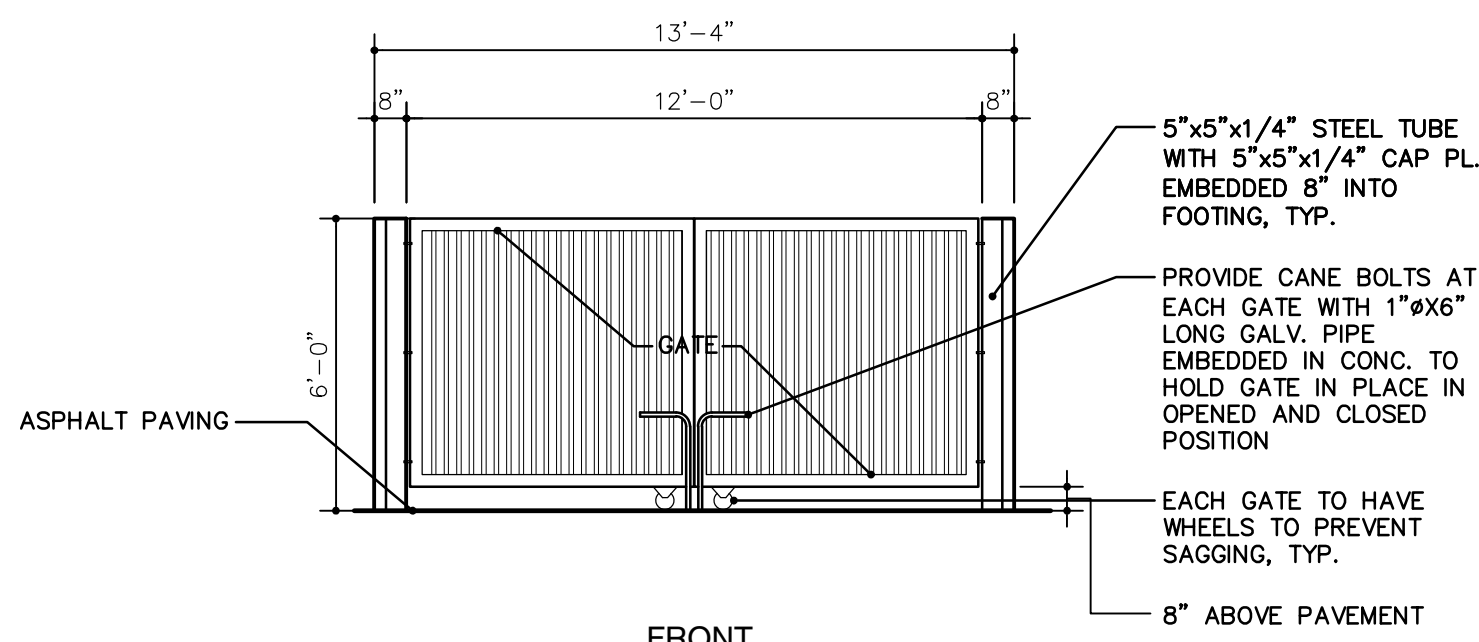
1.1



REAR



SIDE

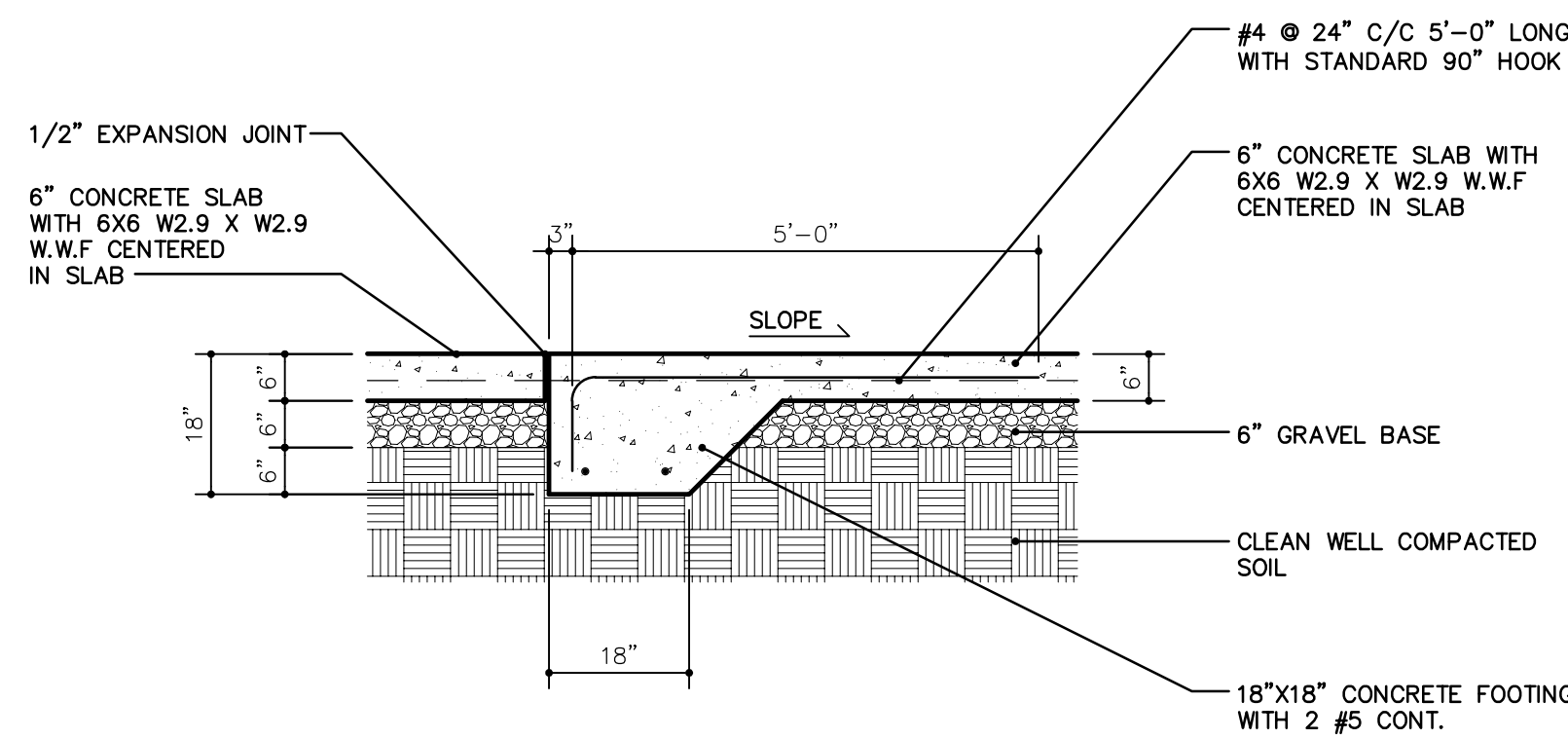


FRONT

DUMPSTER ELEVATIONS

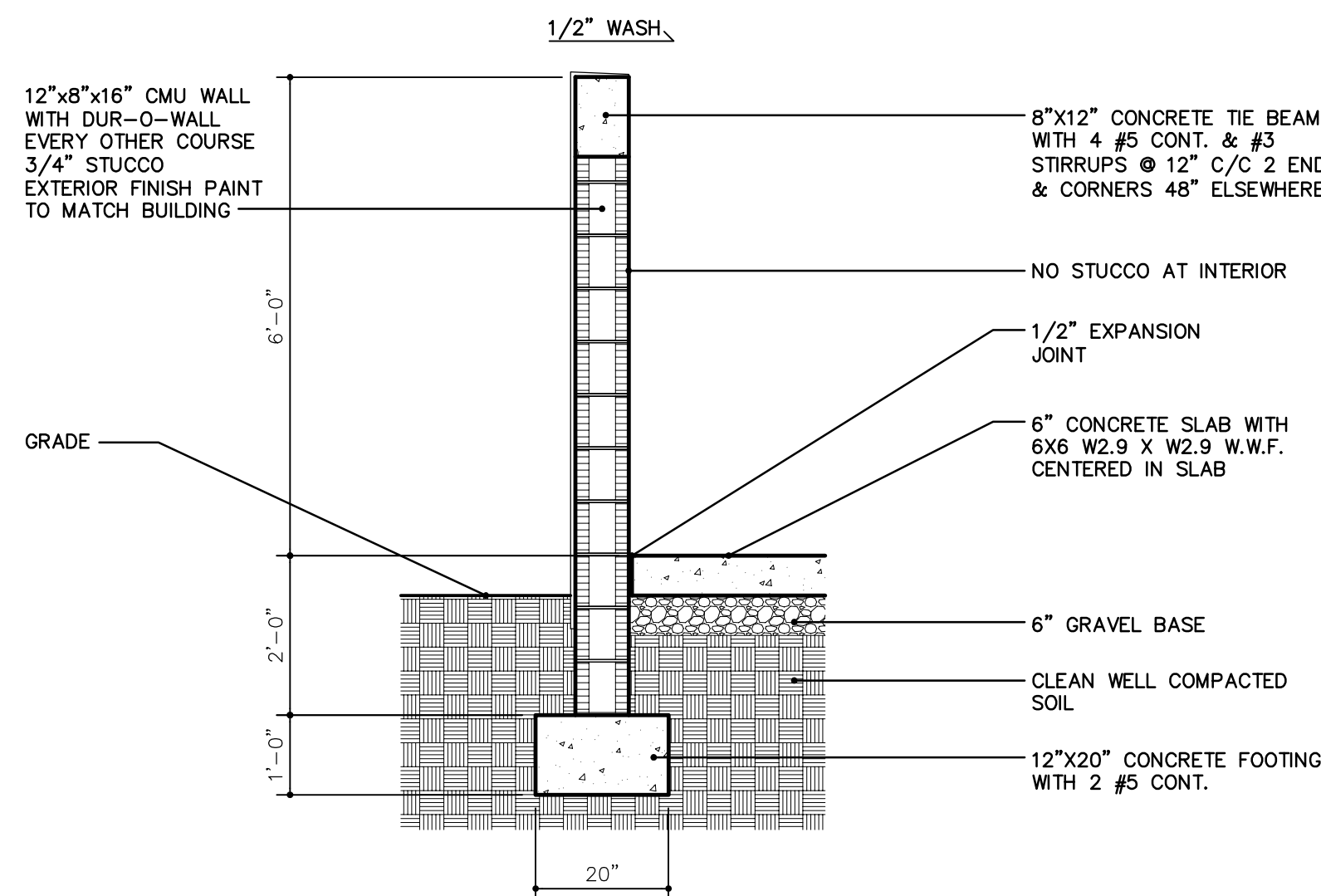
SCALE: 1/4"=1'-0"

3



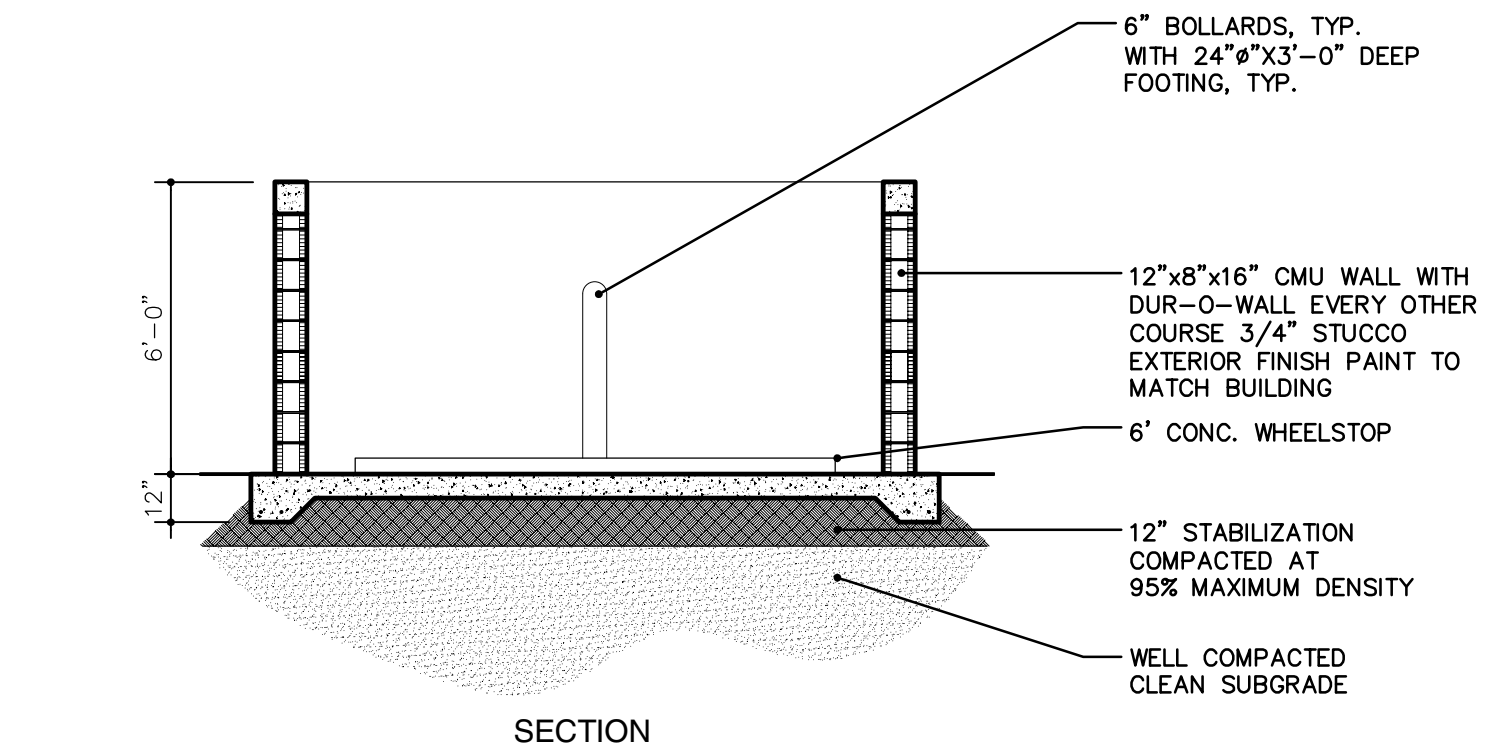
SECTION AT SLAB FOOTING
SCALE: 1/2"=1'-0"

1.3

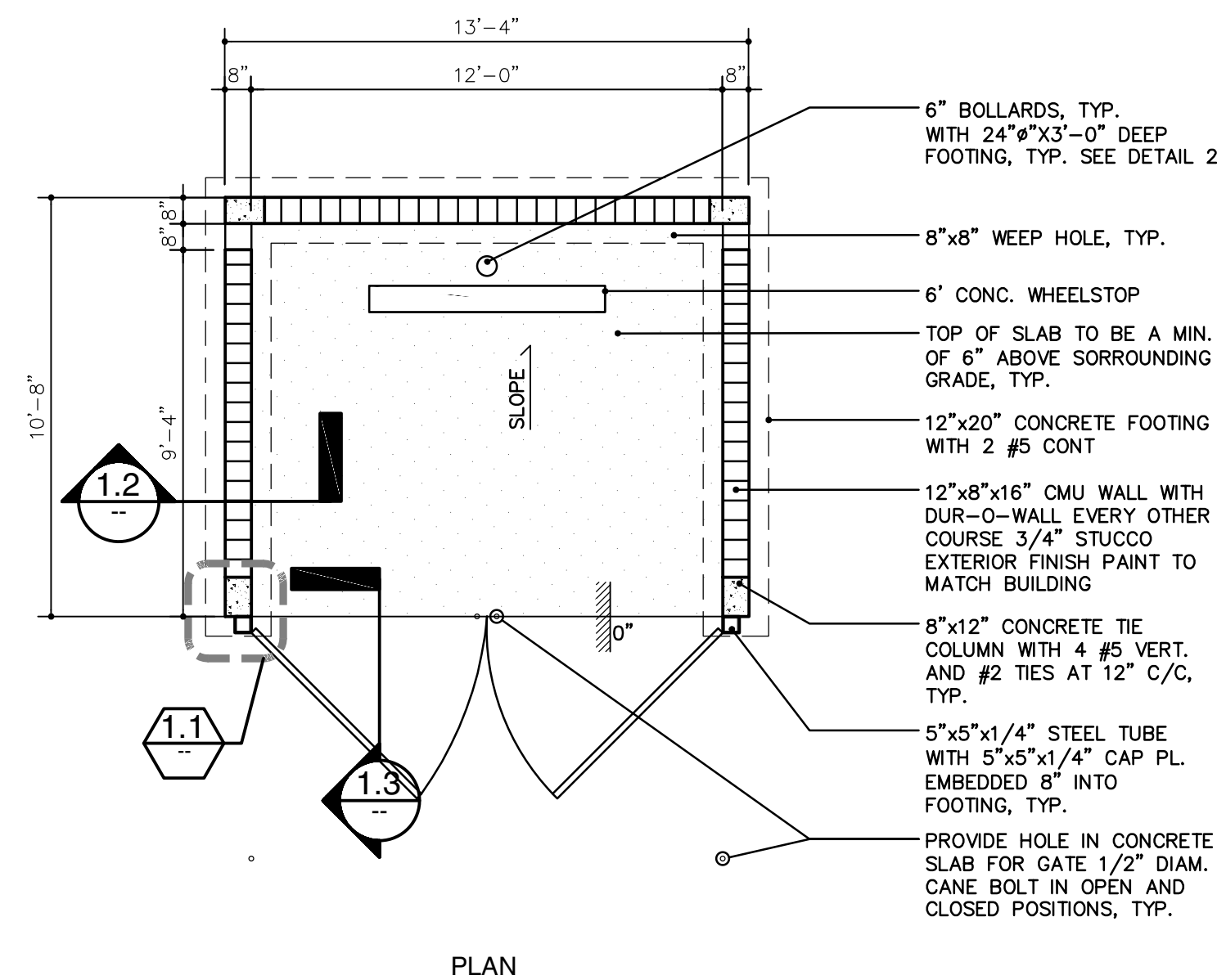


WALL DETAIL
SCALE: 1/2"=1'-0"

1.2



SECTION



PLAN

DUMPSTER ENCLOSURE DETAILS

SCALE: 1/4"=1'-0"

1

NOTES:
1. THE ENCLOSURE GATES SHALL BE OPAQUE.